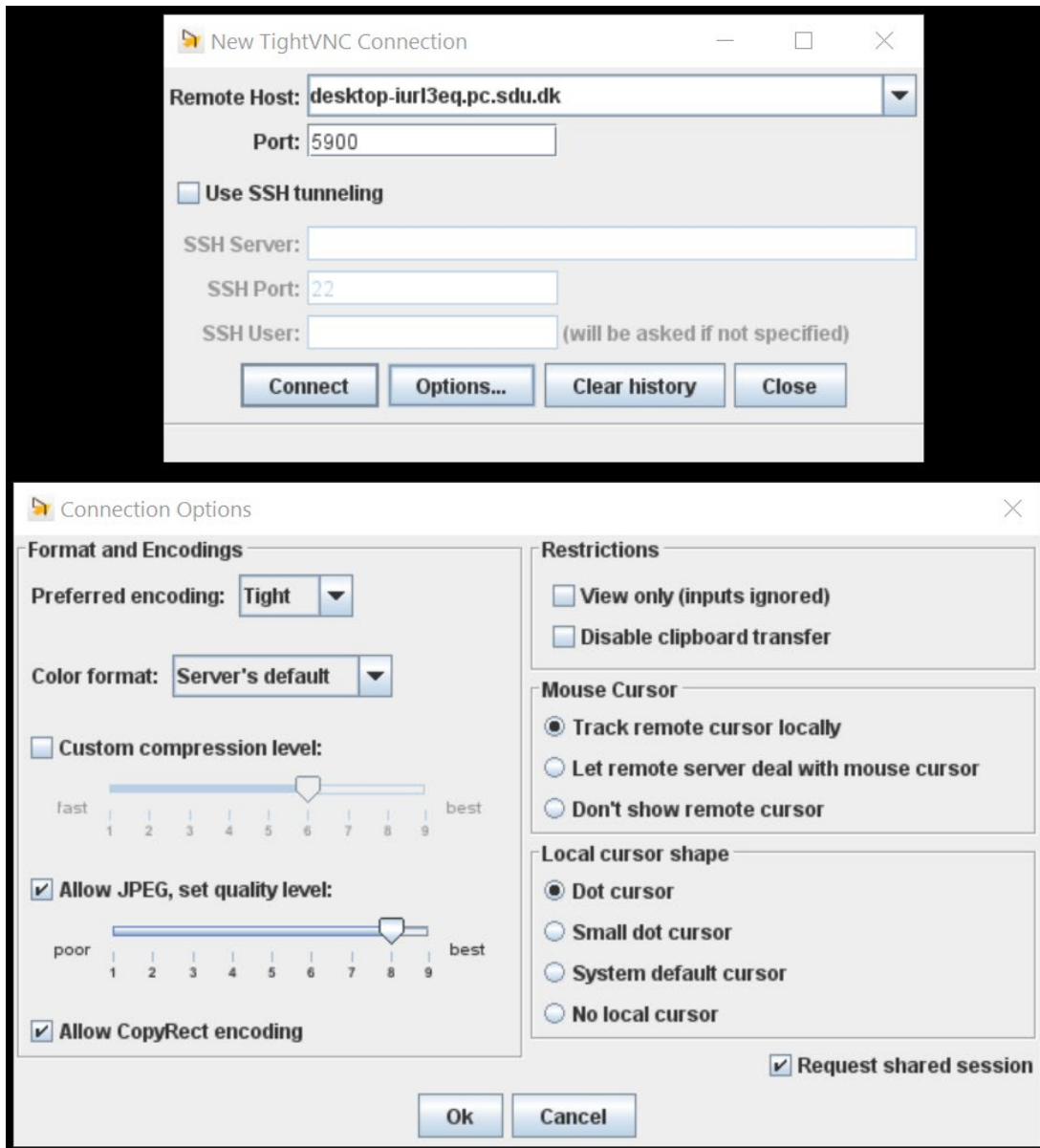


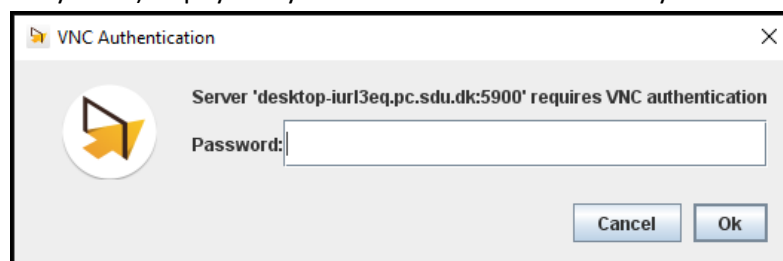
Windows analysis computer remote access

For access via Windows PC

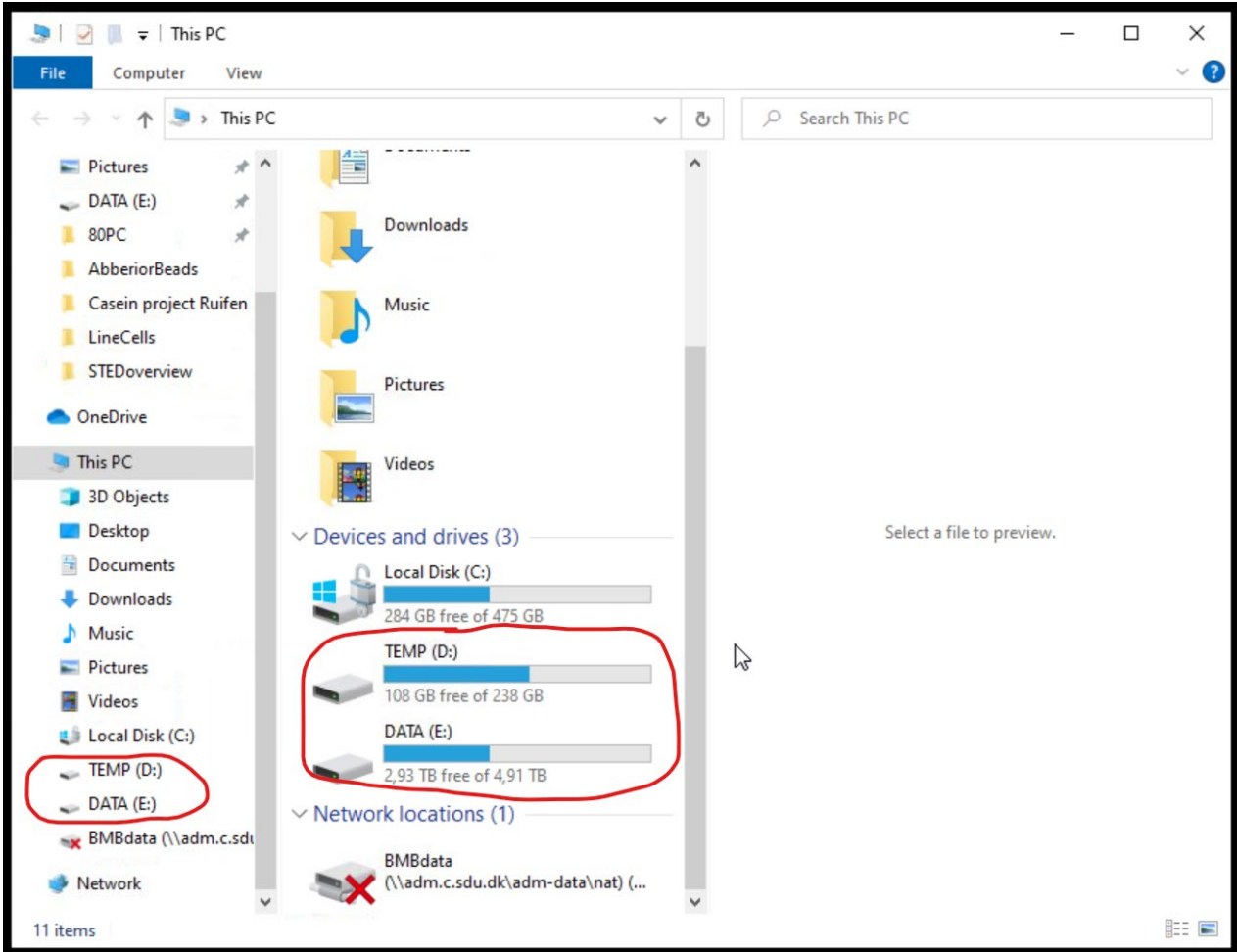
1. Install TightVNC client (<https://www.tightvnc.com/download.php>)
2. Make sure you are on the SDU VPN.
3. Start the program and use the following information for making a new connection (click “options” to view “connection options”), then click connect:



4. In the VNC Authentication window, write the password. See this password on the equipment booking page (under the Windows analysis PC) or physically at the workstation. After this your session should start.

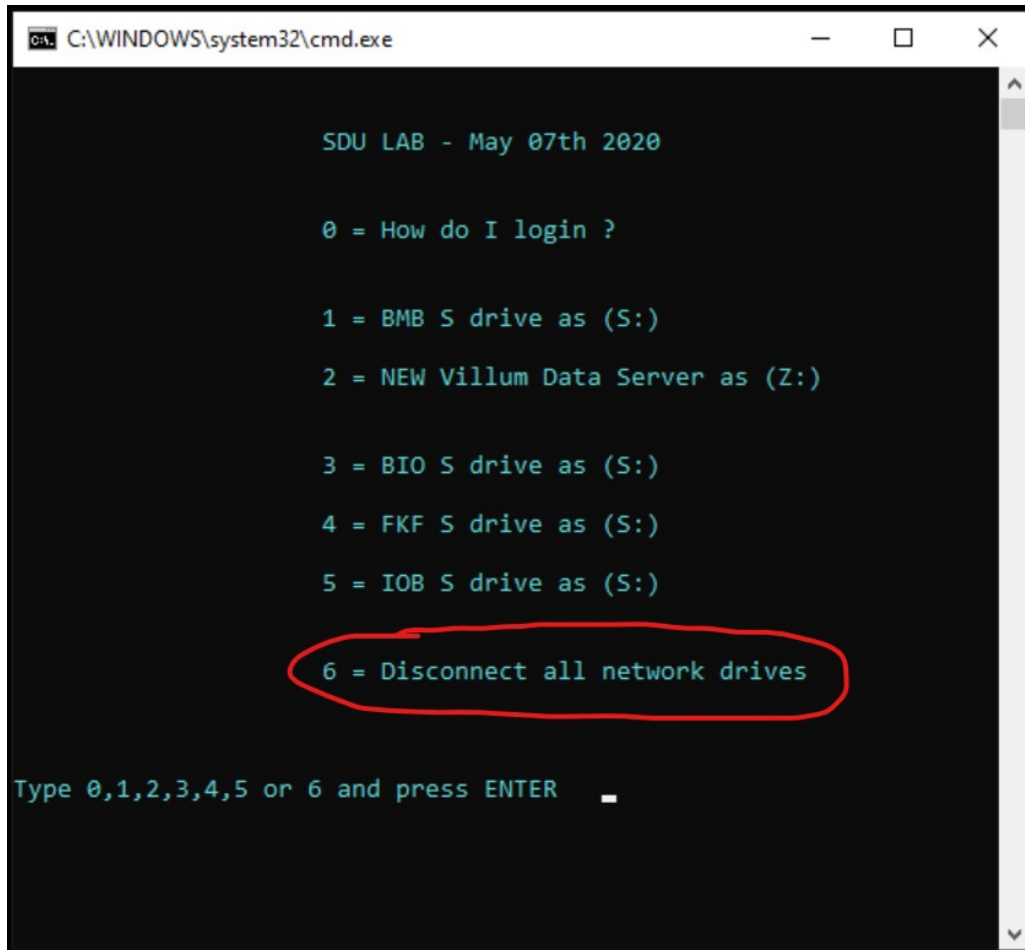


5. For data storage on the Windows analysis PC, please use one of the data drives (in red below).



6. You are responsible for your data. For long term data storage, do not use the Windows analysis PC, but upload your data to the VDS server. See how on this DaMBIC page: <https://dambic.dk/index.php?page=data-storage> . Make sure to prepare your data locally for upload to VDS since the most common access type (WORM i.e. write once read many) only allows you to write data once and thus the data (and datafolder) cannot be changed after it is written to the VDS.

7. When you are finished with your work, close the software, disconnect the VDS via the command prompt (see image below) and terminate your TightVNC session.



```
C:\WINDOWS\system32\cmd.exe

SDU LAB - May 07th 2020

0 = How do I login ?

1 = BMB S drive as (S:)
2 = NEW Villum Data Server as (Z:)

3 = BIO S drive as (S:)
4 = FKF S drive as (S:)
5 = IOB S drive as (S:)
6 = Disconnect all network drives

Type 0,1,2,3,4,5 or 6 and press ENTER
```

For access via Mac OS

If you use Mac OS and are running Java SE version 1.6 or later, you should be able to download and run TightVNC Java Viewer. See <https://www.tightvnc.com/download.php>. This has, however, not been tested by DaMBIC staff yet.