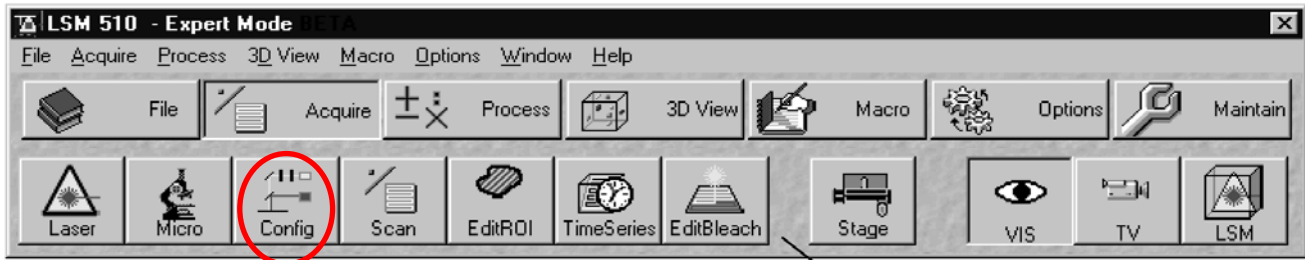
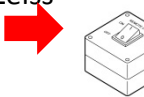
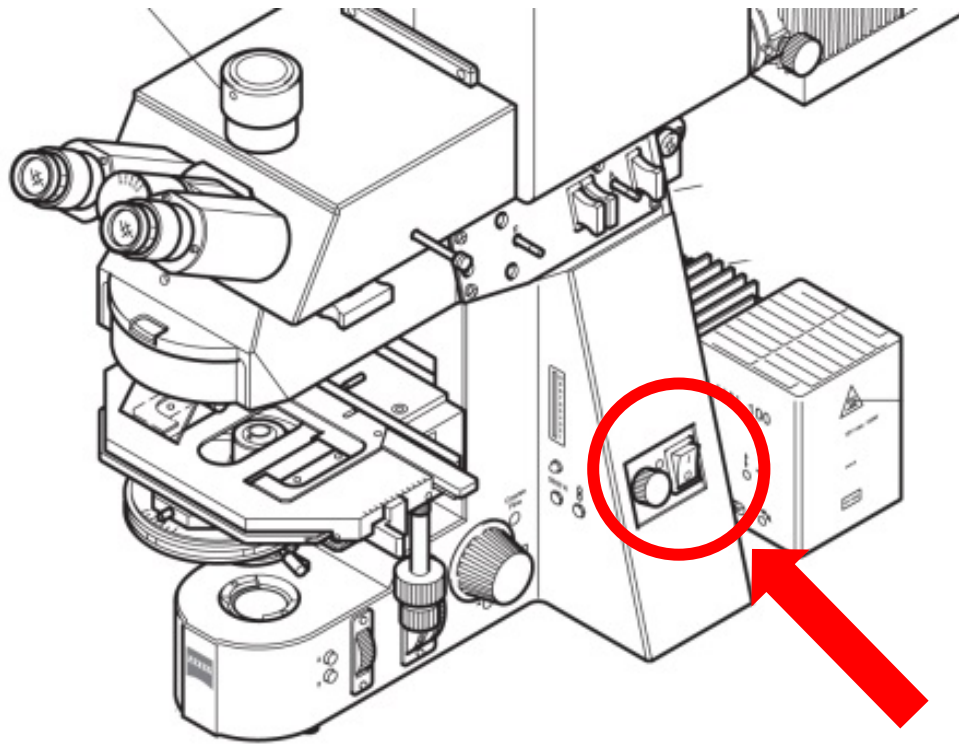


Zeiss LSM510 manual



1. Check the position for laser switch (A-B), should be A for Zeiss or B if for Olympus.
2. Switch on a PC (no password is needed), switch on a lamp (right side from the microscope) and a system button (on the PC table, check if the microscope is on (right button on the Zeiss microscope) 
3. Switch on a software (<Scan New Images> and <Start Expert Mode>)
4. <Acquire> => <Micro> choose the right microscope objective you want to use (magnification, Water/Oil)
5. Check your sample with transmitted light (<VIS> in software)
6. For fluorescence choose **Reflector** and press **FL** on the microscope
 - UV to see blue emission
 - Blue -->green
 - Green -->red
7. To start scanning **switch on laser/laser: for Argon laser first press standby and wait until it is ready, for Mai Tai (if it says BUSY) change wavelength a bit and change back) !**
8. In <Config> menu setup laser you want to use, mirrors, acquisition channels according to your dyes or use your database from the previous experiment.
9. For scanning choose <LSM> and <Scan>
10. Adjust gain, pinhole size and laser power in the <Channels>
11. For recording several dyes in a sequence use Multitrack option: go to <Config>=> <Multitrack>
12. For Z-stack use mark first/last and **fast XY** to set Z value.
13. When finished, **switch off the lamp, lasers, wait until they stop (5 minutes)** and then switch off system button on the table, software and PC.

In the case of problem contact: Vita Solovyeva (vita@memphys.sdu.dk) or Jonathan Brewer (brewer@memphys.sdu.dk)



On/Off